

Preparation of an Update to the San Miguel County Comprehensive Plan, 2018

Architectural Research Consultants, Incorporated (ARC) was retained by San Miguel County, New Mexico, to update the 2004 county Comprehensive Plan.

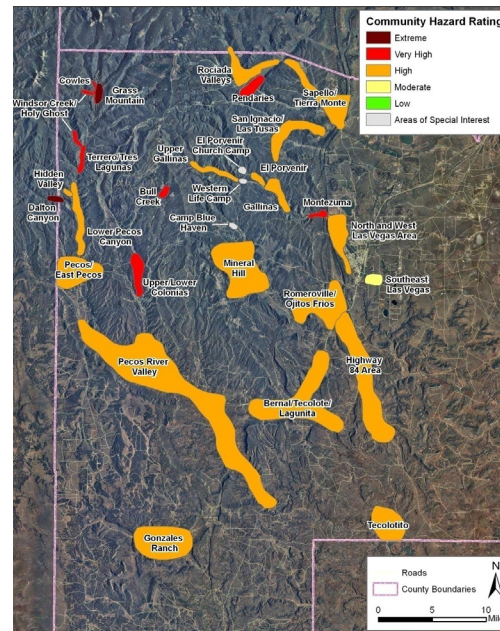
ARC worked with the County Planning and Zoning Commission to review and update land use, economic development (with Quixote Productions), housing, public facilities, infrastructure transportation, water and hazards mitigation plan elements.

Planning included extensive efforts to seek community participation and involvement. ARC conducted seven public visioning meetings throughout the county, four workshop meetings with the planning committee, a series of interviews and focus group discussions during each phase of the project, multiple meetings with county staff to review plan drafts and public hearings with the Board of County Commissioners for plan adoption. In addition, ARC conducted a community survey and created a link on the county website to post reports and other information on the plan. The process included workshops on the draft plan with the Board of County Commissioners.

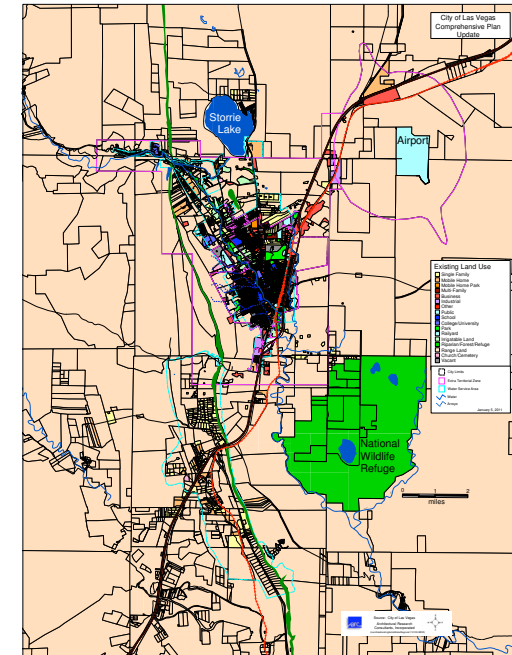
Based on the subarea public visioning meetings, ARC developed a comprehensive report outlining the “Community Conversations” defining topics of concern by subarea and including representative public comments for each topic. This report informed the recommendations and policies developed in the Comprehensive Plan Update. The process also included the development of a Pecos Area Plan.

Client: San Miguel County

Completion: 2018



Left: Map of Wildfire Hazard Ratings for Western San Miguel County



Above: Las Vegas Extraterritorial Area

Below: Unemployment rates



Above: Economic development components